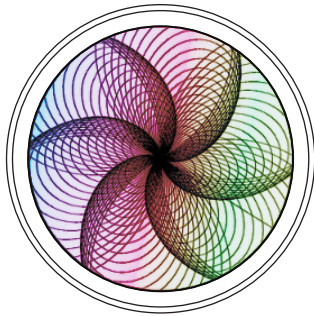




MELONVA



Kinetic Sand Art Device

*Welcome*

*Art in motion, designed to slow time  
Let the movement of sand bring calm to your space.*

## Table of Contents

- 1.Unboxing and Parts List
- 2.Quick Start Guide
- 3.Safety Instructions
- 4.Usage Process and Tips
- 5.Frequently Asked Questions (FAQ)

## 1.Unboxing and Parts List

Welcome to your new Automatic Sand Painting Device!  
After unboxing, please check the following list to ensure all parts are present :

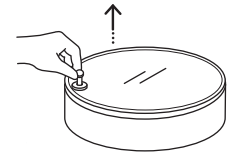
- **Main Unit :**  
Sand Painting Device × 1
- **Painting Component :**  
Small Iron Balls × 2 (Note: These are used for magnetic traction to create patterns in the sand) .
- **Consumable:**  
Special Sand × 1 bag
- **Tools :**  
Sand Comb × 1 (for leveling the sand surface)  
Suction Cup × 1 (for opening the glass cover, if applicable)
- **Power :**  
Power Adapter × 1  
Power Cable × 1

If any parts are missing or damaged, please contact our customer service immediately.

## 2.Quick Start Guide

### • Open the Glass Cover

Use the suction cup to lift the glass cover.



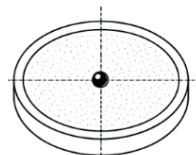
### • Add Sand

Pour the sand evenly onto the surface and level it using the sand comb.



### • Place the Iron Ball

Place ONE iron ball at the center of the sand surface.  
Ensure the ball is attracted and held by the internal magnetic system.



### • Power On

Connect the power and press and hold the power button for 3 seconds.



## 2. Quick Start Guide

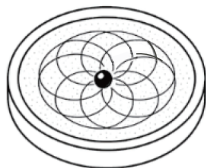
### • Connect to the App

Download and open the melonva app.  
Add the device and complete Wi-Fi setup.



### • Start Drawing

Select a pattern in the app.  
The device will begin drawing automatically.



## 3. Usage Process and Tips

### 1. Preparation :

- Evenly spread the sand on the drawing surface and level it with the sand comb.
- Place only one small iron ball on the sand.
- Power on the device and ensure it is connected to the network.

### 2. Starting a Painting :

- Select a preset pattern from the companion app. The device will automatically control the iron ball(s) to draw the pattern in the sand .
- You can pause the drawing at any time by briefly pressing the power button.

### 3. Safety Instructions :

#### • Power Safety :

Use only the provided original power adapter to prevent damage from voltage instability.

#### • Child Safety :

Children must use this device under adult supervision. **Do not put the small iron balls in your mouth**, as they pose a choking hazard .

## 4. Controls

### Power Button Functions:

- Press and hold (3 seconds): Power ON / OFF
- Short press: Pause / Resume
- Press and hold (10 seconds) Until the red light turns on: Enter network setup mode

## 5. App Download & Network Setup

Scan the QR code below to download the companion app for your device:



Or search for "melonva" in the App Store / Google Play.

### Entering Setup Mode:

- First-time use: device enters setup mode automatically
- Or Press and hold the power button for 10 seconds, then release when the LED turns red.

### Setup Steps:

1. Ensure your Wi-Fi is 2.4GHz (5GHz not supported)
2. Enable Bluetooth on your phone
3. Open the app and tap "+" to add device
4. Enter your Wi-Fi name and password
5. Follow the instructions to complete setup

Once connected, all functions are controlled via the app.

## 6. Frequently Asked Questions (FAQ)

**Q1: The blue light is flashing during setup, but the app can't find the device.**

**A:** Ensure your phone's Bluetooth is enabled. Try turning your phone's Bluetooth off and on, restarting the app, or re-entering the network setup mode.

**Q2: The drawing is interrupted or the pattern is incomplete.**

**A:** This may be caused by an uneven sand surface or the iron ball getting stuck. Pause the device, level the sand again, reposition the iron ball, and then resume.

**Q3: The device won't power on.**

**A:** Check that the power connection is secure. Make sure you are pressing and holding the power button long enough (over 3 seconds).

**Q4: How do I reset the network settings?**

**A:** Press and hold the power button for over 10 seconds to enter setup mode. Then, tap the re-pairing option (usually in the top right corner) within the app's home screen.

## 7. Contact Us

For any questions, missing parts, or technical support, please contact us:

**Email:** [support@melonva.com](mailto:support@melonva.com)

**Website:** [www.melonva.com](http://www.melonva.com)